


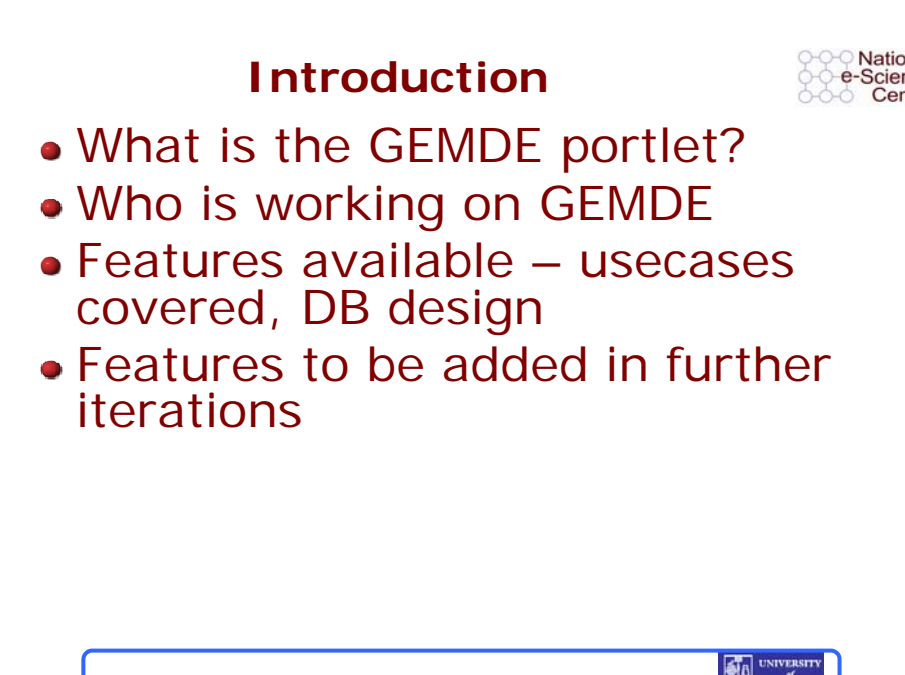
National  
e-Science  
Centre

**GEMDE Portlet**  
**Usecases and Database design**  
Tom Doherty  
t.doherty@physics.gla.ac.uk

*GEMDE Workshop*  
*28<sup>th</sup> of January 2010*




**Introduction**



National  
e-Science  
Centre

- What is the GEMDE portlet?
- Who is working on GEMDE
- Features available – usecases covered, DB design
- Features to be added in further iterations



## What is the GEMDE portlet



- **Grid Enabled Minority Data Environment**
  - Provide a means for social scientists to manage minority data by helping them access, manipulate and link related minority data resources to undertake their own research
- **Basic usecases covered in the portlet are:**
  - Uploading of MIR/MUG metadata and associated files
  - Editing of MIR/MUG metadata and file management
  - Browse previously uploaded MIRs/MUGs based on certain categories such as Country or Time Period (or referents for MUGs)
  - Search for uploaded MIRs – using a keyword search on its metadata



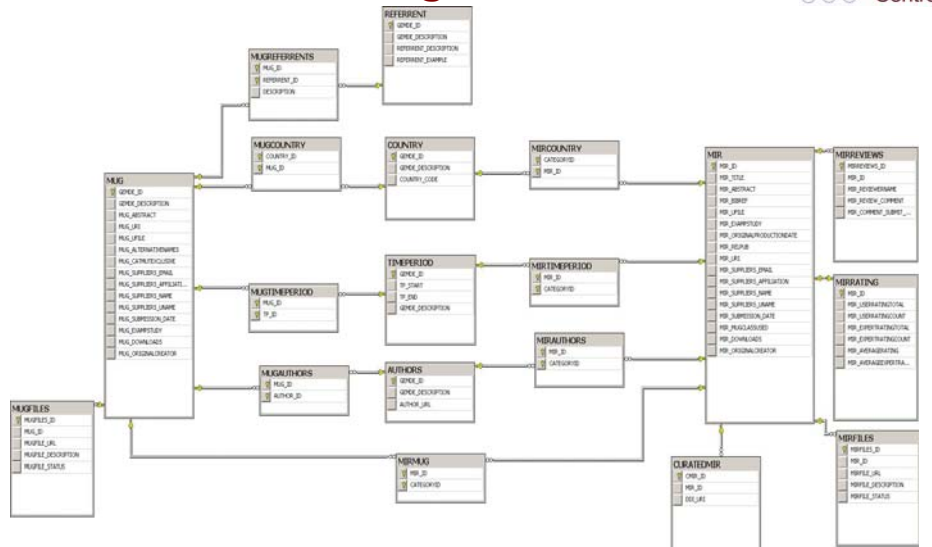
## Initial work on GEMDE



- **Database design (Susan)**
  - MIRs, MUGs, Referents and relationships between them
- **Dames Host – Liferay Portal software (John and Susan)**
  - <https://dames.nesc.gla.ac.uk/web/guest/home>
  - Shibboleth login
- **GEMDE portal interface/code (myself)**
  - Used GEODE code as a template (made it jsr168 compliant)
  - Kept the basic Deposit/Edit/Browse/Search features (and expanded on them)



## GEODE and the GEMDE Database Design



## Upload portlet - Depositing MIRs and MUGs



- Upload Form consists of:
  - Metadata for MIR/MUGs – Title, supplier and original creator information, Abstract and other MIR/MUG specific metadata

MIR
MIR_ID
MIR_TITLE
MIR_ABSTRACT
MIR_BSDIP
MIR_LIFE
MIR_SUPPSTUDY
MIR_ORIGINALPRODUCTIONDATE
MIR_DEJUR
MIR_LRI
MIR_SUPPLIERS_EMAIL
MIR_SUPPLIERS_APPLICATION
MIR_SUPPLIERS_NAME
MIR_SUPPLIERS_DATE
MIR_SUPPSTUDY
MIR_DOWNLOADS
MIR_ORIGINALCREATOR

MUG
GENE_ID
GENE_DESCRIPTION
MUG_ABSTRACT
MUG_LRI
MUG_LIFE
MUG_ALTERNATIVENAMES
MUG_CATALITICINCLUDE
MUG_SUPPLIERS_EMAIL
MUG_SUPPLIERS_APPLICATION
MUG_SUPPLIERS_NAME
MUG_SUPPLIERS_DATE
MUG_SUPPSTUDY
MUG_DOWNLOADS
MUG_ORIGINALCREATOR

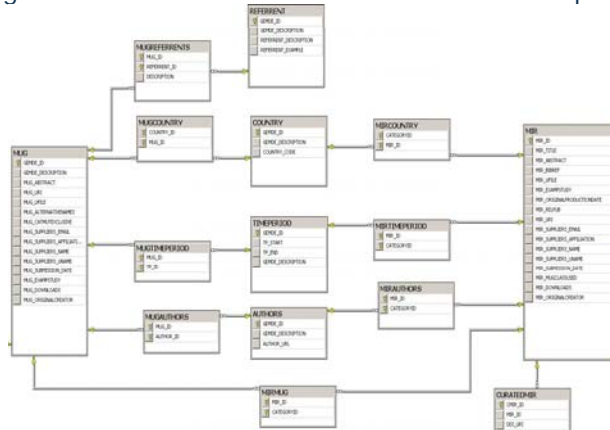
- Files to be uploaded with the resource or MUG



## Upload portlet - Depositing MIRs and MUGs



- Upload Form consists of:
  - Category listings MIR/MUG can be associated with to categorise and make it available under the Browse portlet



Form titled "Entry form for MIRs" with various input fields and sections. The form is annotated with labels on the left side: "metadata" points to the top section with text input fields; "files" points to a section with a table for file uploads; "associations" points to a section with dropdown menus for selecting categories and groups.

**Metadata section:**

- 500 characters text: Enter title of resource here (e.g. CASIS) for Denmark
- 1000 characters text: Enter your abstract here
- 1000 characters text: Enter your abstract here
- 1000 characters text: Enter your abstract here

**Files section:**

File	Description
File	Description
File	Description
File	Description

**Associations section:**

- Country: [Dropdown menu]
- Period: [Dropdown menu]
- Category: [Dropdown menu]
- Group: [Dropdown menu]

Buttons: Upload MIRs, Save on disk, Add Unrecorded, About Upload



## Edit portlet - Changing MIR/MUG metadata or files



### • Edit Portlet consists of:

- A main page that lists all your previously uploaded MIRs/MUGs – when you choose which one you want to edit you get the edit form
- The edit form (is identical to the upload form) with the metadata values for the chosen mir/mug fetched from the DB
- Previously chosen associations are represented by a tick in the drop down boxes.
- It is also possible to manage the uploaded files of the MIR/MUG – for this we introduced a table for each:

MUGFILES	
<input type="checkbox"/>	MUGFILES_ID
<input type="checkbox"/>	MUG_ID
<input type="checkbox"/>	MUGFILE_URL
<input type="checkbox"/>	MUGFILE_DESCRIPTION
<input type="checkbox"/>	MUGFILE_STATUS

MIRFILES	
<input type="checkbox"/>	MIRFILES_ID
<input type="checkbox"/>	MIR_ID
<input type="checkbox"/>	MIRFILE_URL
<input type="checkbox"/>	MIRFILE_DESCRIPTION
<input type="checkbox"/>	MIRFILE_STATUS



## Edit portlet - File Management



### • File management page looks like this:

[GENIE HOME](#) | [BROWSE](#) | [SEARCH](#) | [DEPOSIT NEW DATA RESOURCE](#) | [EDIT DATA RESOURCE](#)

GENIE - [Edit Data Resource](#)

Portlet for editing/deleting data resources previously supplied to GENIE

ID	Filename	File Description	File Status
1	1042010-01-21_12:19:13_ethnicity_modood_1987.doc	MS Word file describing the ethnicity categories	LIVE
2	1042010-01-21_12:19:13_ethnicity_modood_1987.doc	GDData format code for the three related categories LIVE	

Delete File | Archive | Upload Another File | Refresh File List | Back to Edit

manage\_user\_files.jsp

### • It is possible to:

- ▶ Upload more files
- ▶ Archive a file
- ▶ Delete a file



# Browse portlet



- If you have associated your MIR/MUG with a country for example the UK:



- it will be available like this on the browse portlet:

Resource ID	Resource Title	Abstract	Supplier	Expected Date	Original Creator	Original Production Date	Affiliation	Email	MUG Classification Used	Requested citations and/or conditions of use	Current URL	Download Resource
133	Test - Coding frame for ethnicity resources for the UK as used in the study by Mokkoo et al. (1997)	Abstract	Thomas	2010-01-21	Mokkoo, T., Berthou, R., Lakey, J., Nazroo, J., Smith, P., Vines, S., Deshon, S.	1997-01-01	University of Glasgow	stoherty@physics.gla.ac.uk	Ethnic identity measure used by the UK Fourth National Survey of Ethnic Origins (1994), conducted by the Policy Studies Institute	The information provided in these files is taken from reading of Mokkoo, T., Berthou, R., Lakey, J., Nazroo, J. Y., Smith, P., Vines, S., Deshon, S. (1997) Ethnic Minorities in Britain: Diversity and Disadvantage. London: Policy Studies Institute. If you use the file please acknowledge that the file was generated by Paul Lambert as work for the ESRC funded Data Management through e-Social Science Research Node (www.dames.org.uk)	2010-01-21 10:59:27	2010-01-21 10:59:27
134	Test 2 - Coding frame for ethnicity resources for the UK as used in the study by Mokkoo et al. (1997)	Abstract	Thomas	2010-01-22	Mokkoo, T., Berthou, R., Lakey, J., Nazroo, J., Smith, P., Vines, S., Deshon, S.	1997-01-01	University of Glasgow	stoherty@physics.gla.ac.uk	Ethnic identity measure used by the UK Fourth National Survey of Ethnic Origins (1994), conducted by the Policy Studies Institute	The information provided in these files is taken from reading of Mokkoo, T., Berthou, R., Lakey, J., Nazroo, J. Y., Smith, P., Vines, S., Deshon, S. (1997) Ethnic Minorities in Britain: Diversity and Disadvantage. London: Policy Studies Institute. If you use the file please acknowledge that the file was generated by Paul Lambert as work for the ESRC funded Data Management through e-Social Science Research Node (www.dames.org.uk)	2010-01-21 12:19:13	2010-01-21 12:19:13



# Search portlet



- An uploaded MIR is also available through a keyword search on its metadata:

Search:

Find Resources

Resource ID	Resource Title	Abstract	Supplier	Expected Date	Original Creator	Original Production Date	Affiliation	Email	MUG Classification Used	Requested citations and/or conditions of use	Current URL	Download Resource
133	Test - Coding frame for ethnicity resources for the UK as used in the study by Mokkoo et al. (1997)	Abstract	Thomas	2010-01-21	Mokkoo, T., Berthou, R., Lakey, J., Nazroo, J., Smith, P., Vines, S., Deshon, S.	1997-01-01	University of Glasgow	stoherty@physics.gla.ac.uk	Ethnic identity measure used by the UK Fourth National Survey of Ethnic Origins (1994), conducted by the Policy Studies Institute	The information provided in these files is taken from reading of Mokkoo, T., Berthou, R., Lakey, J., Nazroo, J. Y., Smith, P., Vines, S., Deshon, S. (1997) Ethnic Minorities in Britain: Diversity and Disadvantage. London: Policy Studies Institute. If you use the file please acknowledge that the file was generated by Paul Lambert as work for the ESRC funded Data Management through e-Social Science Research Node (www.dames.org.uk)	2010-01-21 10:59:27	2010-01-21 10:59:27
134	Test 2 - Coding frame for ethnicity resources for the UK as used in the study by Mokkoo et al. (1997)	Abstract	Thomas	2010-01-22	Mokkoo, T., Berthou, R., Lakey, J., Nazroo, J., Smith, P., Vines, S., Deshon, S.	1997-01-01	University of Glasgow	stoherty@physics.gla.ac.uk	Ethnic identity measure used by the UK Fourth National Survey of Ethnic Origins (1994), conducted by the Policy Studies Institute	The information provided in these files is taken from reading of Mokkoo, T., Berthou, R., Lakey, J., Nazroo, J. Y., Smith, P., Vines, S., Deshon, S. (1997) Ethnic Minorities in Britain: Diversity and Disadvantage. London: Policy Studies Institute. If you use the file please acknowledge that the file was generated by Paul Lambert as work for the ESRC funded Data Management through e-Social Science Research Node (www.dames.org.uk)	2010-01-21 12:19:13	2010-01-21 12:19:13





## Future iterations



- **Improve usability**
  - Change how Time Periods are used. Allow for a range of years to be entered and associated with a MIR/MUG
  - Improve search criteria to search on multiple keywords (like google) rather than an exact match
- **Curation of resources**
  - Creation of basic DDI when all necessary metadata entered
  - Introduce 'Super' user for curation – admin user can see and edit ALL entered MIRs/MUGs
- **Quality Evaluation**
  - Finish implementation of user/expert/combined rating

